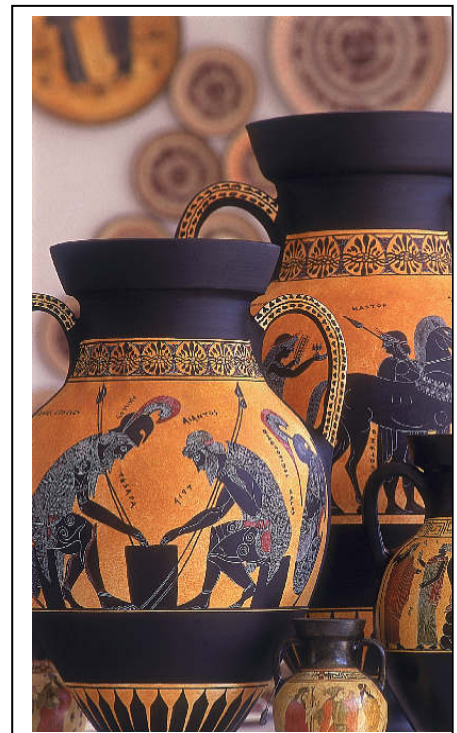
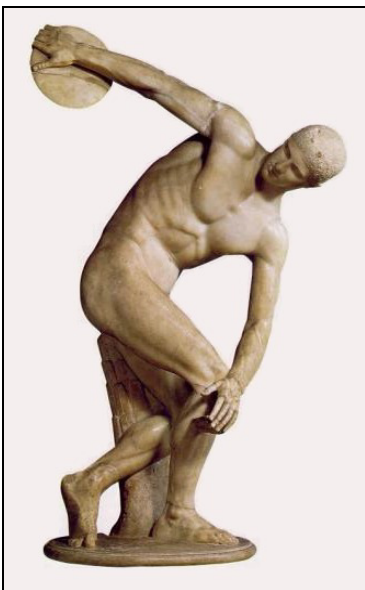
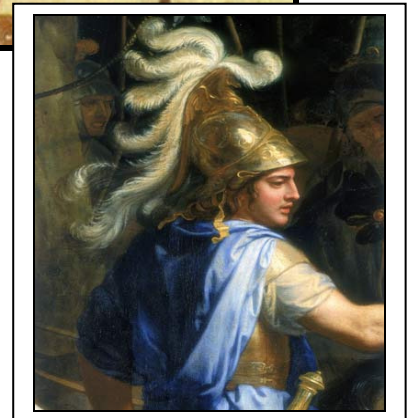
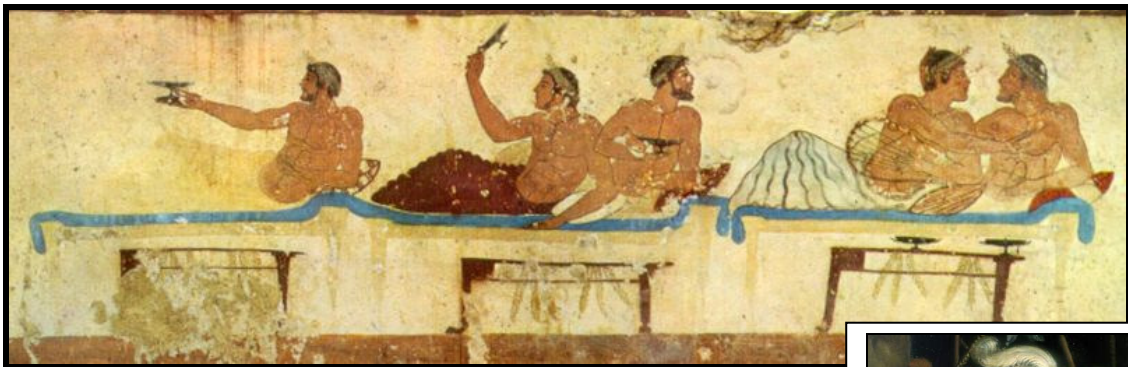


CLASSICAL STUDIES

**NCEA LEVEL 2 COURSE BOOKLET 2012
BURNSIDE HIGH SCHOOL**



**I wish you
an enjoyable
and productive
year
studying Classics**

WHAT IS CLASSICAL STUDIES?

Classical Studies is the study of ancient Greece and Rome without having to study the ancient languages of Greek and Latin.

HOW IS CLASSICAL STUDIES RELEVANT?

- ❖ By studying ancient Greece and Rome you will have a better understanding of the cultural history of Western Europe which is an important part of New Zealand culture. Much of our art, science, literature, law, philosophy, politics and religion comes from ancient Greece and Rome.
- ❖ Classical Studies helps you:
 - broaden your intellectual and cultural horizons
 - develop your awareness and understanding
 - develop a range of skills that are transferable to the outside world, such as the ability to think, research, express yourself clearly and concisely, analyse and present an argument.

BY THE END OF THIS COURSE YOU WILL...

Have an appreciation of selected areas of ancient Greek and Roman civilisation.

Be able to make a comparison between Greek and Roman civilisations and New Zealand today.

Be able to use different resources to provide evidence and argument.

EXPECTATIONS

- ❖ Arrive to class on time - your lateness disrupts the teaching and learning taking place in the classroom.
- ❖ Turn your cell phone off or expect to have your phone confiscated.
- ❖ Complete all class and homework to the best of your ability.
- ❖ **Develop a passion for Classics!**

RESOURCES

- ❖ It is important that you look after school resources.
- ❖ At the end of the year you must **return the resources with the numbers** issued to you.
- ❖ If you misplace a resource please inform your teacher as soon as possible.

COURSE OUTLINE

EXTERNALLY ASSESSED TOPICS	INTERNALLY ASSESSED TOPICS
<p><u>Achievement Standard: 91200 [2.1]</u></p> <p>Examine ideas and values of the classical world</p> <ul style="list-style-type: none"> • Topic: Homer's <i>Odyssey</i> • Number of credits: 4 	<p><u>Achievement Standard: 91202 [2.3]</u></p> <p>Demonstrate understanding of a significant event in the classical world</p> <p>Topic: The death of a city - Pompeii</p> <p>Number of credits: 4</p>
<p><u>Achievement Standard: 91201 [2.2]</u></p> <p>Examine the significance of features of work(s) of art in the classical world</p> <ul style="list-style-type: none"> • Topic: Athenian & Hellenistic Art and Architecture • Number of credits: 4 	<p><u>Achievement Standard: 91204 [2.5]</u></p> <p>Demonstrate understanding of the relationship between aspects of the classical world and aspects of other cultures</p> <ul style="list-style-type: none"> • Topic: Classical influences on other cultures • Number of credits: 6

External Examinations:

- In your examination paper you will be provided with four questions for each Achievement Standard.
- You will choose ONE question for each Achievement Standard we study.
- Your answers may be in the form of extended paragraphs and/or bullet pointed notes. Diagrams and annotated sketches may be used in support.
- After each set of questions you will be given one page to plan your answer and 3 or more pages to write your answer on.

Internal Assessments:

- You will be provided with specific instructions and guidelines for each internal assessment

Please keep in mind that:

- School and departmental policies on year 12 assessment apply to this subject.
- It is your responsibility to keep a record of all marked work.

ASSESSMENT RECORDS

ACHIEVEMENT STANDARDS		MY GRADES
HOMER'S <i>ODYSSEY</i> 2.1	Practice question	
	Practice question	
	Practice question	
	End of year exam	
ATHENIAN ART 2.2	Practice question	
	Practice question	
	Practice question	
	End of year exam	
INTERNAL ASSESSMENT: 2.3	The death of a city: Pompeii	
INTERNAL ASSESSMENT: 2.5	Classical influences	



**Lebes Gamikos
LOGIE COLLECTION**

CLASSICAL STUDIES YEAR 12 LEARNING & TEACHING PROGRAMME 2012

TERM 1	Week 1 31 Jan-3 F.	Week 2 6-10 Feb	Week 3 13-17 Feb	Week 4 20-24 Feb	Week 5 27 Feb-2M	Week 6 5-9 Mar	Week 7 12-16 Mar	Week 8 19-23 Mar	Week 9 26-30 Mar	Week 10 1-5 Apr	
Teaching Programme	Introduction		THE DEATH OF A CITY - POMPEII AS 2.3 / 91202 Version 1				TOPIC 1 – ATHENIAN ART AS 2.2 / 91201 Version 1				
Assessment	INTERNAL ASSESSMENT: To be handed in on Monday 19 th March						EXTERNAL ASSESSMENT				

TERM 2	Week 1 23 -27 Apr.	Week 2 30 A.-4 May	Week 3 7-11 May	Week 4 14-18 May	Week 5 21-25 May	Week 6 28 M-1June	Week 7 4-8 June	Week 8 11-15 June	Week 9 18-22 June	Week 10 25-29 June	
Teaching Programme	TOPIC 1 – ATHENIAN ART AS 2.2 / 91201 Version 1					TOPIC 2: HOMER'S <i>ODYSSEY</i> AS 2.1 /91200 Version 1					
Assessment	EXTERNAL ASSESSMENT To be done in class: TWO common assessments					EXTERNAL ASSESSMENT To be done in class: TWO common assessments					

TERM 3	Week 1 16-20 July	Week 2 23-27 July	Week 3 30 J-3 Aug.	Week 4 6-10 Aug	Week 5 13-17 Aug	Week 6 20-24 Aug.	Week 7 27-31 Aug.	Week 8 3-7 Sept	Week 9 10-14 Sept	Week 10 17-21 Sept.	Week 11 24-28 Sept.
Teaching Programme	TOPIC 2: HOMER'S <i>ODYSSEY</i> AS 2.1 /91200 Version 1			CLASSICAL INFLUENCES ON OTHER CULTURES AS: 2.5 / 91204 Version 1			REVISION	EXAMS		TOPIC 2 HOMER	
Assessment	INTERNAL ASSESSMENT: To be handed in on Monday 22 nd October										

TERM 4	Week 1 15-19 Oct.	Week 2 22-26 Oct	Week 3 29 O.-2 Nov	Week 4 5-9 Nov	Week 5 12-16 Nov	Week 6 19-23 Nov	Week 7 26-30 Nov.	Week 8 3-7 Dec	Week 9 10-13 Dec.
Teaching Programme	REVISION Seniors finish on Tuesday 13 th November								
Assessment	To hand internal in 22 nd Oct.								

